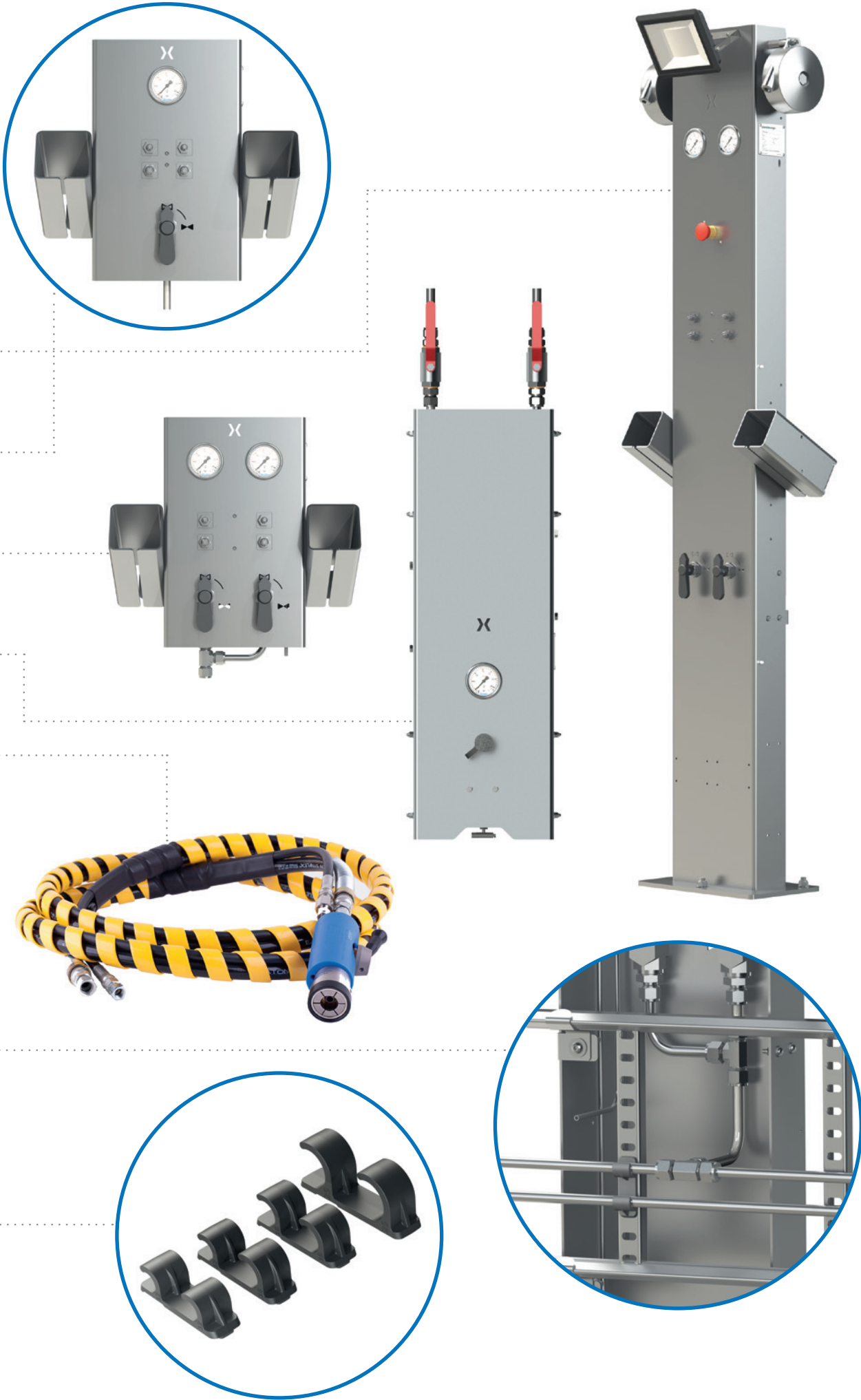


# Product Catalogue



# Table of content

|                                 |       |
|---------------------------------|-------|
| Welcome to Sherex .....         | 5     |
| SHERPOST .....                  | 6-7   |
| SHERBEAM .....                  | 10-11 |
| SHERWALL .....                  | 14-15 |
| SHERFLAK .....                  | 16-17 |
| SHERHOSES .....                 | 18-19 |
| SHERMOUNT piping system .....   | 20-21 |
| SHERCLICK mounting system ..... | 22-23 |
| European Service Center .....   | 24-25 |
| Examples of references .....    | 26    |
| Product list .....              | 27    |





# Welcome to Sherex

**Sherex grant you fast and reliable deliveries of CBG refueling components and -services. With the fastest delivery time in the market**

This has been our vision since the foundation of Sherex back in 1994. Today we are proud of being one of Europe's leading suppliers of CBG equipment for owners of refueling plants, where cars, buses and trucks are refueled with biogas or natural gas.

Our office and workshops are situated in Søborg, close to Copenhagen in Denmark. From our facilities here, we deliver service and products to our customers across Europe and Asia.

Through the years we have developed an unmatched know-how ensuring our customers both top quality and the fastest delivery time in the market:

- Ultra-quick repair times for filling equipment such as nozzles, break-away couplings and hose sets
- Always well-stocked for emergency supplies
- Our European Service Center has all the expertise in-house, all the equipment – and more than 15 years of experience
- Sherex complete hose sets ready for use, delivered within 24 hours

The Sherex product range is designed by the Danish designer Rune Balle.

Please, feel free to contact us for more information

**regaco a/s**

Vandtårnsvej 100, st. tv  
DK-2860 Søborg · Denmark

+45 33 22 45 02  
info@regaco.eu  
www.regaco.eu





# SHERPOST heavy-duty filling post

The SHERPOST filling posts are built for mounting directly on a small concrete slab. SHERPOST is dimensioned for slow filling of vehicles and consists of stainless steel and corrosion-resistant materials. SHERPOST filling posts are suited for the SHERMOUNT piping system and come with a shut-off-valve, ensuring that hoses can easily be changed or serviced without having to shut down the entire filling station. There is a pressure indicator on the SHERPOST for each filling hose.

SHERPOSTS require minimal civil works and are quickly installed hence lowering total project costs.

Delivered excl. hoses. See page 18-19 for hose options.



**SINGLE DISPENSER:**  
SHERPOST-1-NGV1



**DOUBLE DISPENSER:**  
SHERPOST-2-NGV1



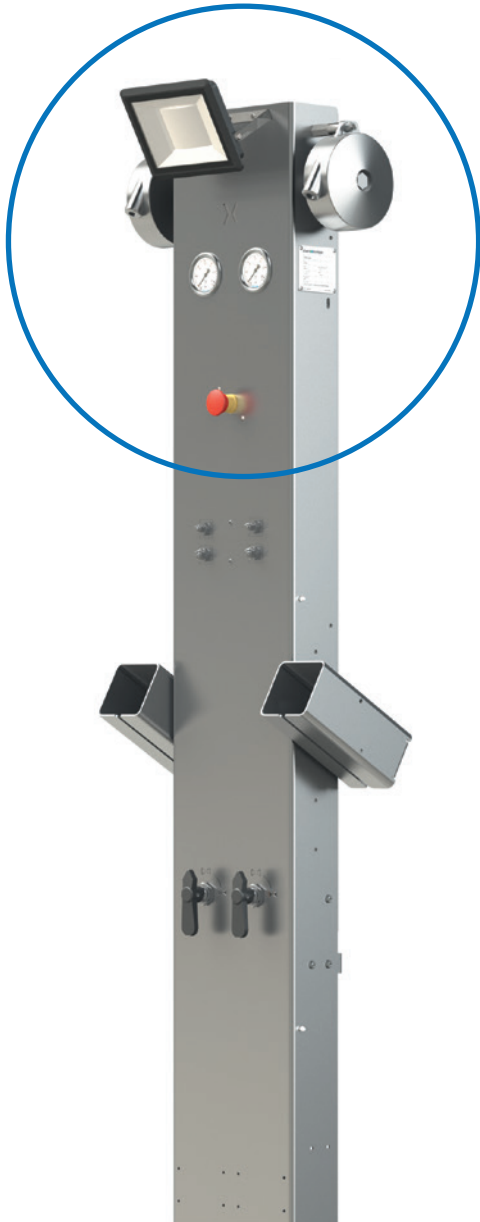
**SINGLE DISPENSER:**  
SHERPOST-1-NGV2



**DOUBLE DISPENSER:**  
SHERPOST-2-NGV2



**DOUBLE DISPENSER:**  
SHERPOST-2-NGV1 & NGV2



**OPTIONAL:**  
LED LIGHTING INCL.  
MOVEMENT SENSORS  
AND EMERGENCY STOP:  
SHERSCREEN-LIGHT  
SHERPOST-STOP





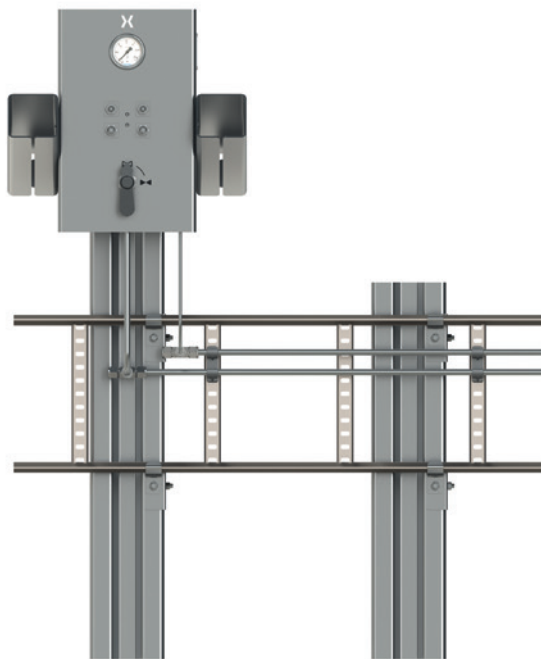


# SHERBEAM for wall-hanging or rammed posts

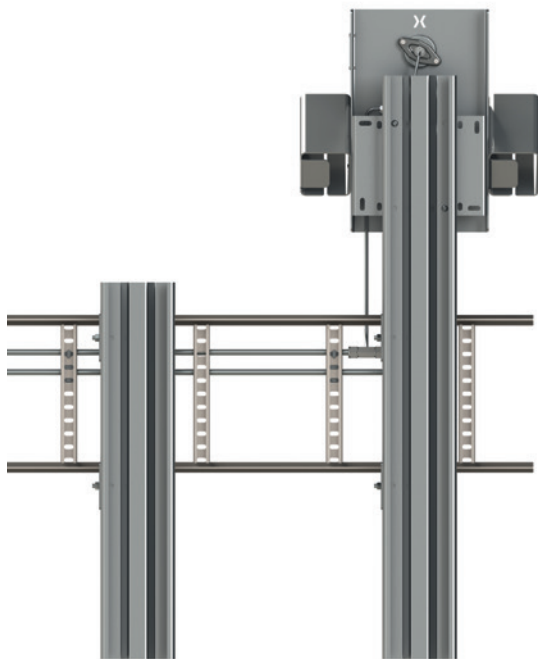
The SHERBEAM filling posts can either be wall-hung or mounted on rammed posts (not included in supply). SHERBEAM is dimensioned for slow filling of vehicles and consists of stainless steel and corrosion-resistant materials. SHERBEAM filling posts are suited for the SHERMOUNT piping system and comes with a shut-off-valve, ensuring that hoses can easily be changed or serviced without having to shut down the entire filling station. There is one pressure indicator on each SHERBEAM.

SHERBEAMS require minimal civil works and are quickly installed hence lowering total project costs.

Delivered excl. hoses. See page 18-19 for hose options.



SHERBEAM-2 on a rammed post – from the front



SHERBEAM-2 on a rammed post – from the back



DOUBLE DISPENSER:  
SHERBEAM-2-NGV1



DOUBLE DISPENSER:  
SHERBEAM-2-NGV2



DOUBLE DISPENSER:  
SHERBEAM-2-NGV1 & NGV2







# SHERWALL heavy-duty filling panel for wall mounting

The SHERWALL filling posts can either be wall-hung or mounted on rammed posts (not included in supply). SHERWALL is dimensioned for slow filling of vehicles and consists of stainless steel and corrosion-resistant materials. SHERWALL filling posts are suited for the SHERMOUNT piping system and comes with a shut-off-valve, ensuring that hoses can easily be changed or serviced without having to shut down the entire filling station. There is a pressure indicator for each filling hose on the SHERWALL.

Delivered excl. hoses. See page 18-19 for hose options.



**SINGLE DISPENSER:**  
SHERWALL-1-NGV1



**SINGLE DISPENSER:**  
SHERWALL-1-NGV2



**DOUBLE DISPENSER:**  
SHERWALL-2-NGV1



**DOUBLE DISPENSER:**  
SHERWALL-2-NGV2



**DOUBLE DISPENSER:**  
SHERWALL-2-NGV1 & NGV2



# SHERFLAK wall mounted panel

– for emptying of CBG trailers

The SHERFLAK is a wall-mounted panel specifically designed for emptying of CBG containers/ trailers. SHERFLAKs are designed for optimal emptying of trailers and fittings and piping should not restrict the system. Each SHERFLAK comes with shut-off valves and a pressure indicator. SHERFLAK are suited for integration with our SHERMOUNT piping system.

Depending on the containers, the SHERFLAKS can either have NGV1 or NGV2 connections.



NGV1 CONNECTIONS:

SHERFLAK-1-NGV1



NGV2 CONNECTIONS:

SHERFLAK-NGV2

SHERHOSES are complete hose assemblies made according to our customers specifications. High pressure hose suitable for CBG refueling applications featuring conductive inner tube to dissipate static electric build up. Extra tough cover for abrasion water and micro biological resistance. Nonmetallic lightweight design for easy handling and manipulation. Rugged construction to give kink - crush - twist and pull resistance. Other colors available on request.

SHERHOSES come with certificates and are fully tested ready to use.

Specific request for hose size (1/2" hoses available), breakaway types and filling nozzles can be accommodated upon request.

## NGV1 HOSES

3/8" + 1/4" Twinhose, CT1000LS, NGVLB, BRW.08

3/8" + 1/4" Twinhose, CT1000LS, NGVLB, ILB-1

3/8" + 1/4" Twinhose, excl. breakaways and nozzles

## NGV2 HOSES

3/8" + 1/4" Twinhose, CT5000S, NGVLB, BRW08

3/8" + 1/4" Twinhose, CT5000S, NGVLB, ILB-5

3/8" + 1/4" Twinhose, excl. breakaways and nozzles

## HOSE LENGTHS:

Standard length (A): 5000 / 6000 / 7000 mm

Customized: Choose dimensions A or B and C

## STANDARD DIMENSIONS

A 5000 / 6000 / 7000 mm

B 1000 mm

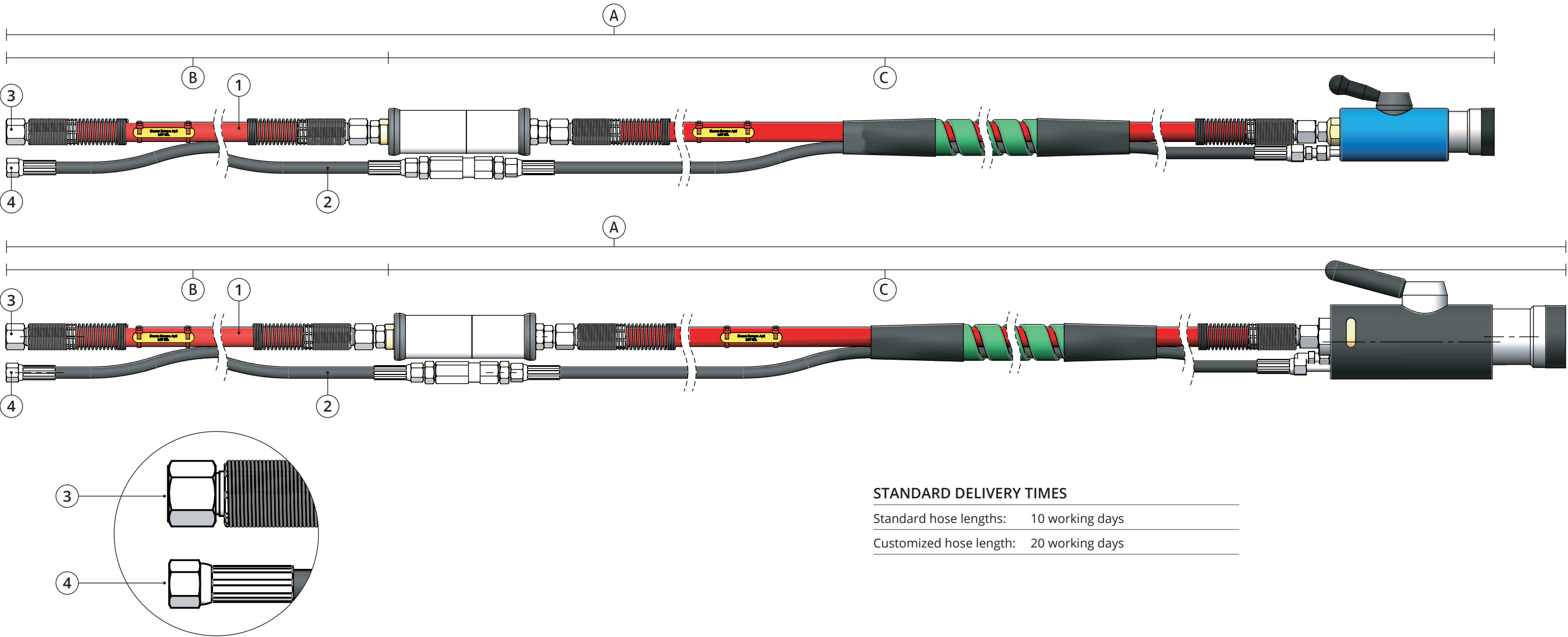
C 4000 / 5000 / 6000 mm

1 3/8" main filling hose

2 1/4" vent hose

3 9/16 F-JIC VHP C 3/8

4 7/16 F-JIC VHP C 1/4



## STANDARD DELIVERY TIMES

Standard hose lengths: 10 working days

Customized hose length: 20 working days



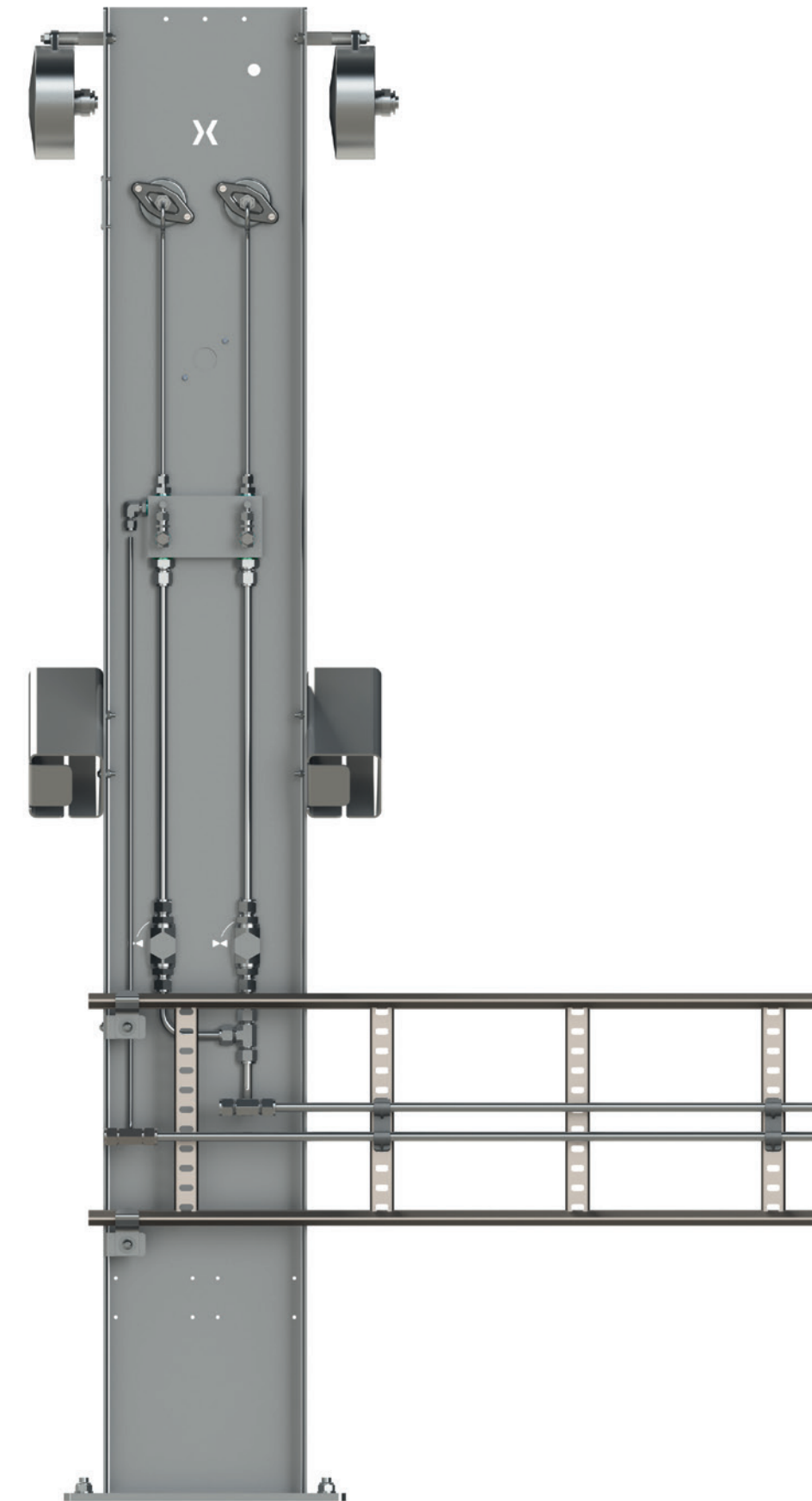
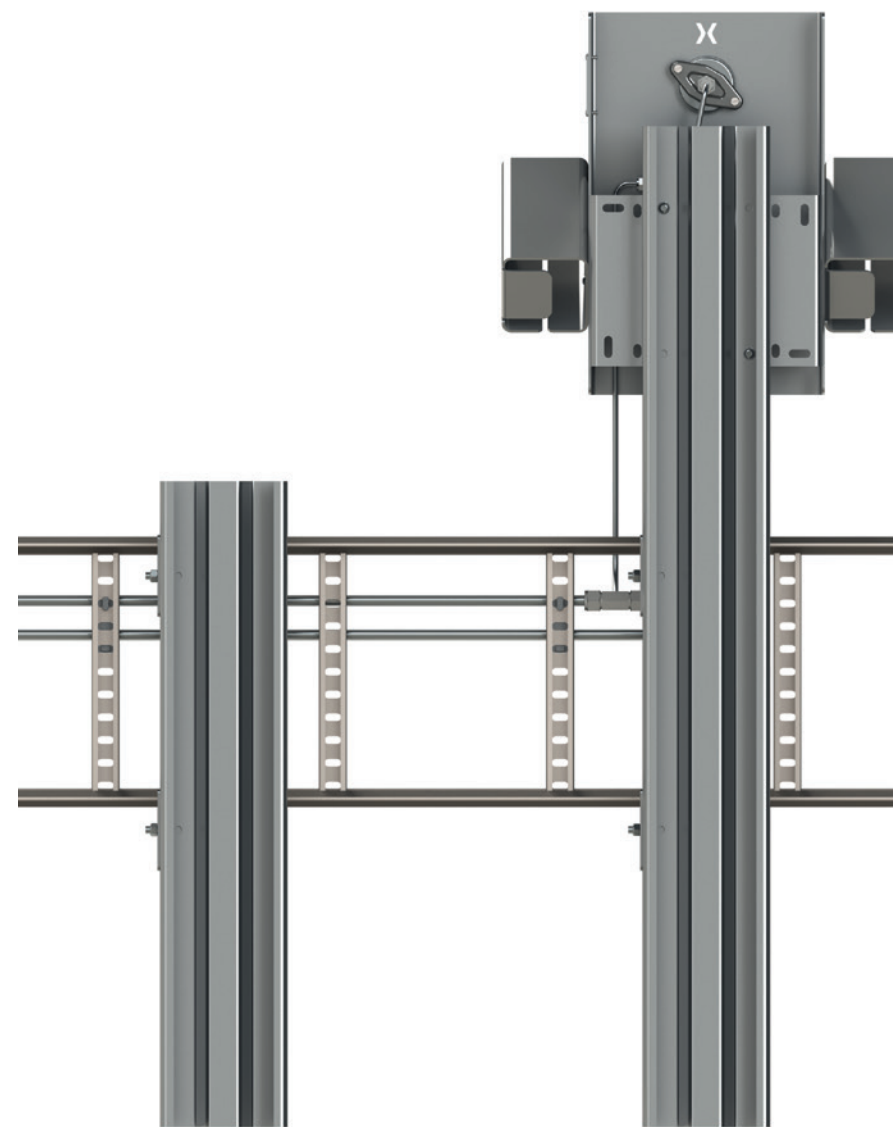
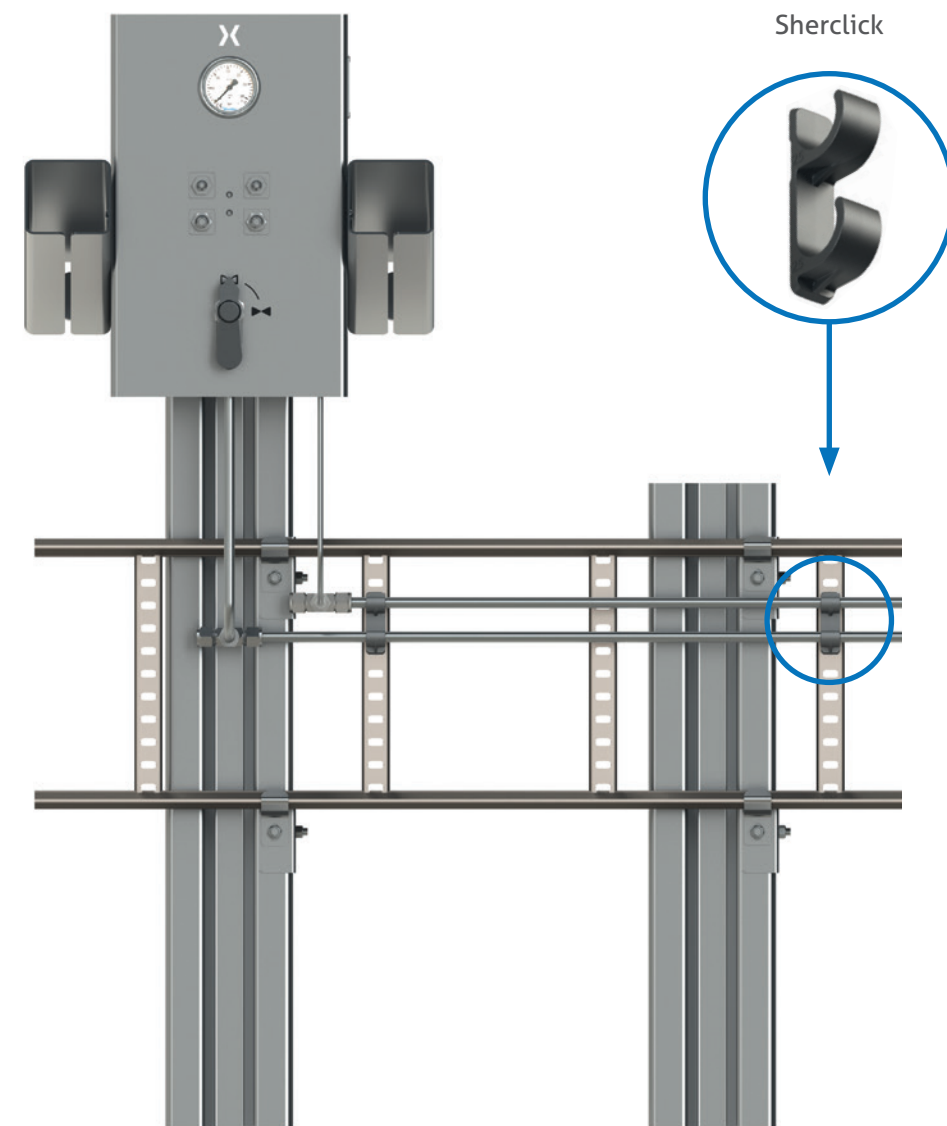
# SHERMOUNT piping system

The SHERMOUNT piping system is made for easy mounting and assembly of CBG filling ramps with SHERFILL filling posts.

The system is based on cable ladders and uses our SHERCLICK mounting system for holding pipes in place – hence making the system almost free from screws.

Our experience from over 20 installed and commissioned filling ramps throughout Europe, is that it is possible to save up to 50% of mounting/installation time on site – hence lowering costs.

See page 22-23 for SHERCLICK mounting system.





# SHERCLICK Mounting system

The SHERCLICK mounting system is specifically designed for easy and trouble-free mounting of seamless stainless steel pipes on the SHERMOUNT cable ladders.

SHERCLICK eliminates the need for screwing and welding of pipes on site.

## SHERCLICK

|               |                |
|---------------|----------------|
| Double 12 mm: | SHERCLICK-1212 |
|---------------|----------------|

## SHERCLICK

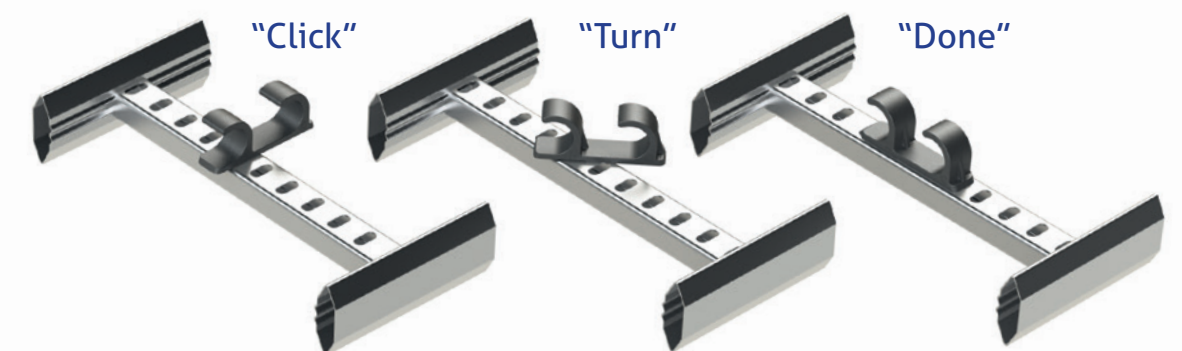
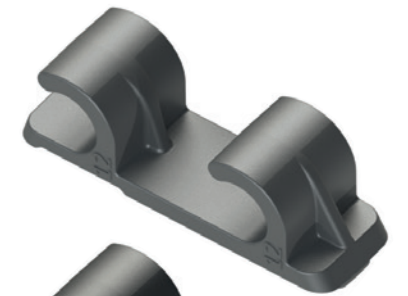
|                        |                |
|------------------------|----------------|
| Mixed 12 mm and 16 mm: | SHERCLICK-1216 |
|------------------------|----------------|

## SHERCLICK

|               |                |
|---------------|----------------|
| Double 16 mm: | SHERCLICK-1616 |
|---------------|----------------|

## SHERCLICK

|               |                |
|---------------|----------------|
| Double 25 mm: | SHERCLICK-2525 |
|---------------|----------------|







# European Service Center

## Sherex European Service Center

At our certified service center located in Copenhagen, Denmark we have the necessary know-how and equipment to perform service and refurbishment on most CBG equipment.

We are specialized in refurbishment of all OPW filling equipment and Stäubli BRW.08 breakaways.

All equipment is thoroughly checked, and damaged parts are replaced. All items are pressure-tested, leak-tested and quality assured before leaving our service center.

### TYPICAL REFURBISHMENT PERIOD

|                 |                     |
|-----------------|---------------------|
| OPW equipment:  | max 10 working days |
| Stäubli BRW.08: | max 10 working days |





# Product list



Esbjerg · Denmark · 2020



Gladsaxe · Denmark · 2017



Jönköping · Sweden · 2021



Ringe · Denmark · 2018



Skive · Denmark · 2017



Aalborg · Denmark · 2018

## SHERPOST

### *SHERPOST heavy-duty filling post*

#### Single Dispensers:

SHERPOST-1-NGV1  
SHERPOST-1-NGV2

#### Double Dispensers:

SHERPOST-2-NGV1  
SHERPOST-2-NGV2  
SHERPOST-2-NGV1 & NGV2

#### Optional: LED lighting incl. Movement sensors:

SHERSCREEN-LIGHT  
SHERPOST STOP

*Delivered excl. hoses. See page 18-19 for hose options.*

## SHERWALL

### *SHERWALL heavy-duty filling panel for wall mounting*

#### Single dispensers:

SHERWALL-1-NGV1  
SHERWALL-1-NGV2

#### Double dispensers:

SHERWALL-2-NGV1  
SHERWALL-2-NGV2  
SHERWALL-2-NGV1 & NGV2

*Delivered excl. hoses. See page 18-19 for hose options.*

## SHERFLAK

### *SHERFLAK wall mounted panel for emptying of trailers down to 20 barg.*

#### NGV1 connections:

SHERFLAK-1-NGV1

#### NGV2 connections:

SHERFLAK-1-NGV2

*Delivered excl. hoses. See page 18-19 for hose options.*

## SHERBEAM

### *SHERBEAM for wall-hanging or ramming*

#### Double dispensers:

SHERBEAM-2-NGV1  
SHERBEAM-2-NGV2  
SHERBEAM-2-NGV1 & NGV2

*Delivered excl. hoses. See page 18-19 for hose options.*

## SHERHOSES

### NGV1 Hoses

3/8" + 1/4" Twinhose, CT1000LS, NGVLB, BRW.08  
3/8" + 1/4" Twinhose, CT1000LS, NGVLB, ILB-1  
3/8" + 1/4" Twinhose excl. breakaways and nozzles

### NGV2 Hoses

3/8" + 1/4" Twinhose, CT5000S, NGVLB, BRW08  
3/8" + 1/4" Twinhose, CT5000S, NGVLB, ILB-5  
3/8" + 1/4" Twinhose excl. breakaways and nozzles

### Hose lengths:

Standard length: 5000 / 6000 / 7000 mm  
Customized: Choose dimensions A or B and C

## SHERMOUNT PIPING SYSTEM

The SHERMOUNT piping system is made for easy mounting and assembly of CBG filling ramps with SHERFILL filling posts.

Our experience from over 20 installed and commissioned filling ramps throughout Europe, is that it is possible to save up to 50% of mounting/installation time on site – hence lowering costs.

Contact us for more information

## SHERCLICK MOUNTING SYSTEM

### Double 12 mm SHERCLICK:

SHERCLICK-1212

### Mixed 12mm and 16mm SHERCLICK:

SHERCLICK-1216

### Double 16mm SHERCLICK:

SHERCLICK-1616

### Double 25mm SHERCLICK:

SHERCLICK-2525



**regaco a/s**

Vandtårnsvej 100, st. tv  
DK-2860 Søborg · Denmark

+45 33 22 45 02  
info@regaco.eu  
www.regaco.eu

Responsible printing



5041 0826



This is a carbon neutral  
printed product